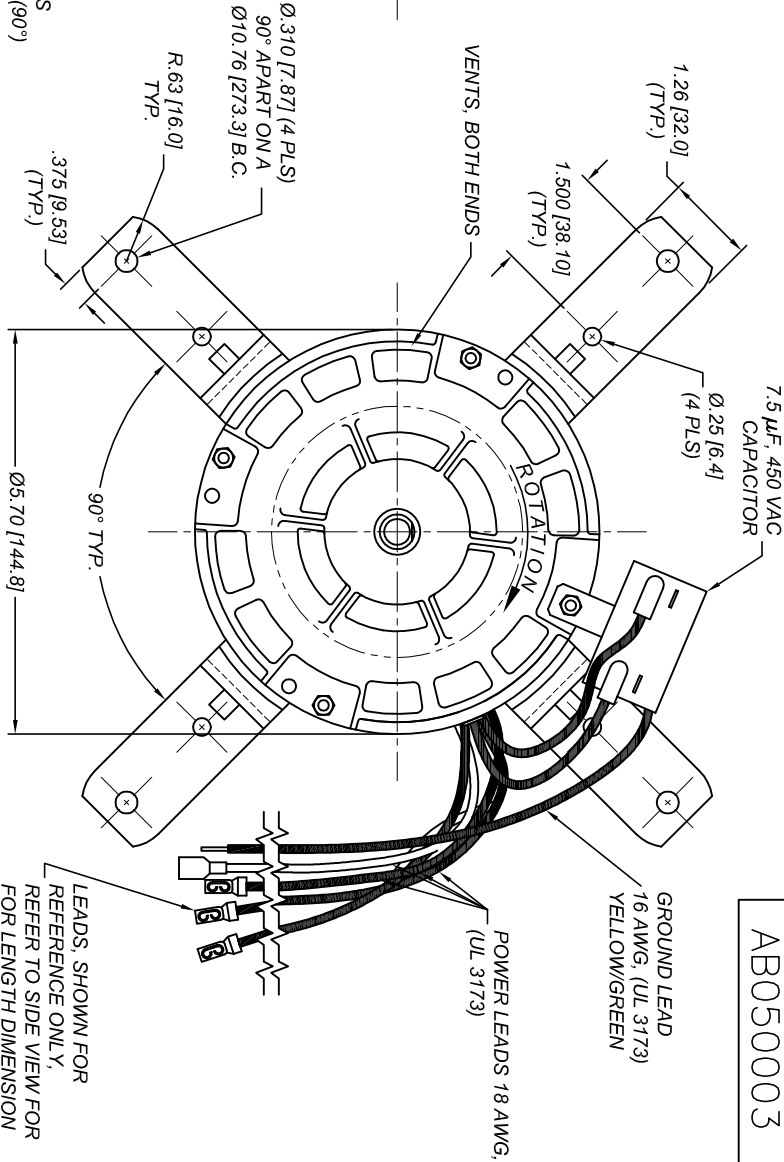
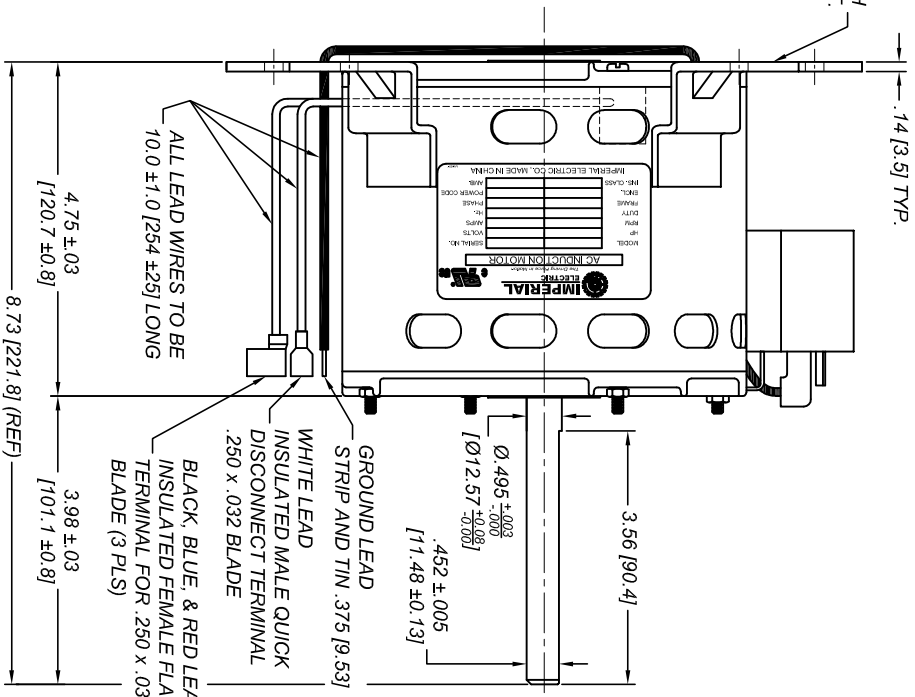


(4) LEGS FLUSH WITH END BRKT.



AB050003



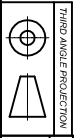
AC INDUCTION MOTOR

MODEL	AB050003	SERIAL NO.
HP	1/2	120 VAC VOLTS
RPM	1100/870	6.25/8.5 AMPS
DUTY CONT.	60/50 Hz.	
FRAME ENCL.	48/OPAO	1 PHASE
	THERMALLY PROTECTED	C L.R. CODE
INS. CLASS	B1	40°C AMB.

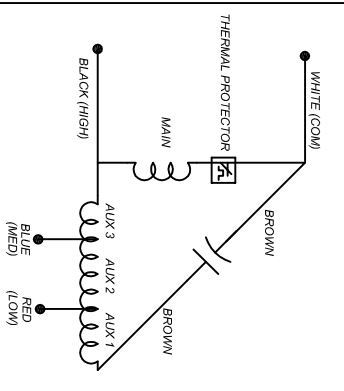
IMPERIAL ELECTRIC CO., MADE IN CHINA

NOTES:

- 1.) ROTATION IS CW WHEN VIEWING SHAFT END
- 2.) MOTOR FRAME IS PAINTED BLACK, END BRACKETS ARE CAST ALUMINUM.
- 3.) ROTOR SUPPORTED BY BALL BEARINGS.
- 4.) SPEEDS AND CURRENTS LISTED ARE FOR REFERENCE ONLY, ACTUAL PERFORMANCE WILL VARY BY APPLICATION.



REV.	ECN NO.	DATE	APPR.
A	21209	01/07/02	JHE
B	21251	03/26/02	JHE
C	21306	05/29/02	JHE
D	21343	08/12/02	JHE
E	21370	09/18/02	JHE
F	21691	01/13/04	JHE
G	21851	11/04/04	JHE
H	21993	03/09/05	MDC



TITLE	BLOWER MOTOR (3-SPEEDS)
MODEL NO.	AB050003
FRAME SIZE	48
SCALE	N.T.S.
DRAWN	J. ENGLE
DATE	01/07/02

IMPERIAL ELECTRIC CO. DWG. NO. AB050003 REV. H