



IMPERIAL
ELECTRIC
The Driving Force In Motion

DC Elevator Hoist Motor Standard Ratings

240 Volt DC Armature, Shunt Wound, Ball Bearings, Elevator End Play, 50°C Rise
60 Minute Duty, Open Construction

HP	RPM	Frame	Amps (A)		Resistance (Ω)		Hot Field Volts (V)		
			Full Load Armature	Hot Field	Cold Field 25°C	Hot Field 75°C	Level Max	Run & Hold Max	Hold Prefer
10	1150	284AT	37.7	1.00	138.0	166.0	240	166	141
	850	286AT	37	1.76	85.0	102.0	240	180	153
12.5	1150	286AT	46.5	1.12	126.0	151.0	240	170	144
	850	324AT	46	1.85	81.6	96.9	240	179	152
15	1150	324AT	53	2.18	70.5	84.6	240	183	155
	850	326AT	54	2.23	68.5	82.2	240	183	148
20	1150	326AT	71	2.20	65.0	78.0	240	172	148
	850	366AT	73	2.25	63.4	76.0	240	171	146
25	1150	366AT	90	2.33	63.4	76.0	240	177	150
	850	367AT	90	2.67	56.6	68.0	240	180	153
30	1150	367AT	105	2.68	56.6	68.0	240	182	155
	850	368AT	106	3.00	47.0	56.4	240	169	143
40	1150	368AT	140	3.00	47.0	56.4	240	170	145
	850	368AT	138	4.40	31.6	40.5	240	180	145
50	1150	368AT	175	4.14	31.6	39.2	240	162	138
	850	407AT	175	4.94	28.8	36.0	240	178	150
60	1150	407AT	208	4.92	26.8	33.1	240	163	138
	850	S409AT	208	6.30	23.6	29.8	240	188	160
75	1150	S409AT	257	5.75	23.6	29.5	240	170	145
	850	409AT	264	7.60	17.4	22.1	240	168	126
100*	1150	409AT	273.0	7.15	19.2	24.8	240	178	150

* 100 HP Armature Amps at 300V DC Armature Voltage

For other mechanical and electrical configurations, consult factory.

Imperial Electric
1503 Exeter Road
Akron, OH 44306
Phone: (330) 734-3600
Fax: (330) 734-3601
www.ImperialElectric.com

Contact: Dennis Rhodes
Elevator Sales Engineer
Rhodesd@ImperialElectric.com
Ext. 206

10/17/2002 REV A

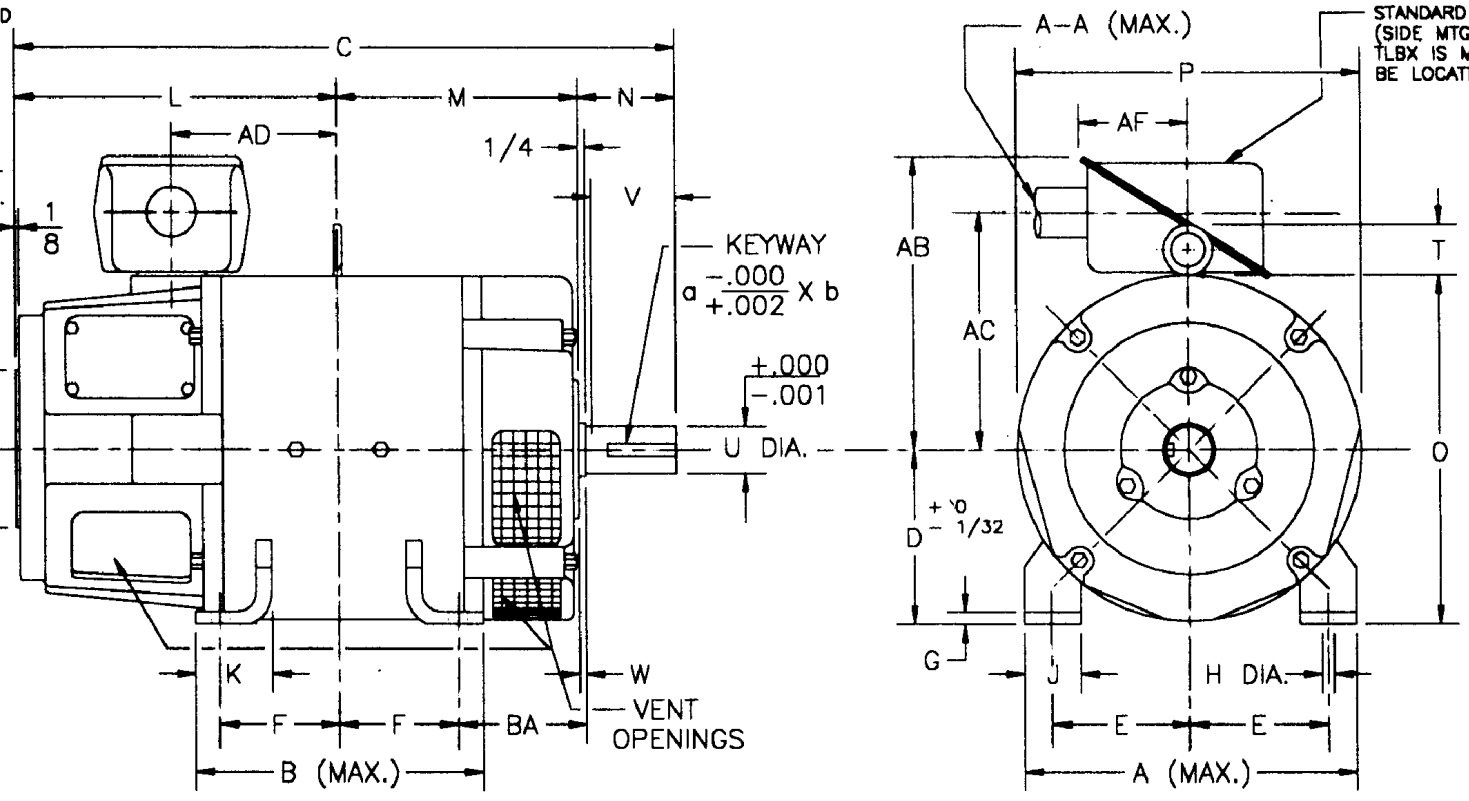
1. CRANK EXT. ON SHAFT WHEN REQ'D PER DWG. 1-2000-0196.

2. STANDARD F.E. ACCESSORY MTG. (1975-86,90-PRESENT).

(3) 3/8-16 TAPPED HOLES @ 120° ON A 5-3/4 DIA. B.C. (REMOVE EXISTING BOLTS ON UNIT FOR 280-320-360 FRAME SIZES).

ACCESSORY MTG. DIA. X 1/8 LG. (NOMINALLY FLUSH WITH REGISTER DIA. FACE)

(2) 1/4-20 X 1/2 DEEP TAPPED HOLES ON A 1-1/4 DIA. B.C.



FRAME	A	B	BA	C	D	E	F	G	H	J	K	L	M	N	O	P	T	U	V	W	a	b	AA	AB	AC	AD	AF	ROT. WK ²	UNIT WT.	WT.
258AT	12 1/2	15	4 1/4	29 1/8	6 1/4	5	6 1/4	13/32	17/32	2	2 3/4	15 1/8	10 3/8	3 3/8	12 3/8	12 1/4	2 3/8	1 5/8	3	1 1/8	3/8	3/16	1 1/2	10 7/8	8 5/8	8 1/4	4	2.8	75	340
259AT	12 1/2	16 1/2	4 1/4	30 3/8	6 1/4	5	7	13/32	17/32	2	2 3/4	15 7/8	11 1/8	3 3/8	12 3/8	12 1/4	2 3/8	1 5/8	3	1 1/8	3/8	3/16	1 1/2	10 7/8	8 5/8	8 3/4	4	3.2	85	380
284AT	14	12 1/2	4 3/4	26 5/8	7	5 1/2	4 3/4	17/32	17/32	2 1/4	3 1/8	13 3/8	9 3/8	3 7/8	13 7/8	13 3/4	2 3/8	1 7/8	3 1/2	1 1/8	1/2	1/4	2	11 5/8	9 3/8	6 5/8	4	3.6	100	375
286AT	14	14	4 3/4	28 1/8	7	5 1/2	5 1/2	17/32	17/32	2 1/4	3 1/8	14 1/8	10 1/8	3 7/8	13 7/8	13 3/4	2 3/8	1 7/8	3 1/2	1 1/8	1/2	1/4	2	11 5/8	9 3/8	7 3/8	4	4.2	115	410
324AT	16	14	5 1/4	28 1/4	8	6 1/4	5 1/4	21/32	21/32	2 1/2	3 5/8	13 1/2	10 3/8	4 3/8	15 7/8	15 3/4	2 3/8	2 1/8	4	1 1/8	1/2	1/4	2	12 5/8	10 3/8	6 3/4	4	8.6	132	600
326AT	16	15 1/2	5 1/4	29 3/4	8	6 1/4	6	21/32	21/32	2 1/2	3 5/8	14 1/4	11 1/8	4 3/8	15 7/8	15 3/4	2 3/8	2 1/8	4	1 1/8	1/2	1/4	2	12 5/8	10 3/8	7 1/2	4	10.1	155	675
366AT	18	18	5 7/8	34 1/8	9	7	7	25/32	13/16	3	4 1/4	16 1/2	12 3/4	4 7/8	17 7/8	17 11/16	2 3/4	2 3/8	4 1/2	1 1/8	5/8	5/16	3	14 13/16	11 3/4	7 7/8	4 1/2	15.5	225	850
367AT	18	20	5 7/8	35 7/8	9	7	8	25/32	13/16	3	4 1/4	17 1/4	13 3/4	4 7/8	17 7/8	17 11/16	2 3/4	2 3/8	4 1/2	1 1/8	5/8	5/16	3	14 13/16	11 3/4	8 5/8	4 1/2	17.7	260	940
368AT	18	22	5 7/8	37 7/8	9	7	9	25/32	13/16	3	4 1/4	18 1/4	14 3/4	4 7/8	17 7/8	17 11/16	2 3/4	2 3/8	4 1/2	1 1/8	5/8	5/16	3	14 13/16	11 3/4	9 5/8	4 1/2	20.2	300	1025
407AT	20	22	6 5/8	42 5/8	10	8	9	25/32	15/16	3	4 1/4	21 3/4	15 7/8	5 7/8	20	19 7/8	2 3/4	2 5/8	5	3/8	5/8	5/16	3	15 5/16	12 7/8	11 1/4	4 1/2	44.0	455	1390
409AT	20	26	6 5/8	46 5/8	10	8	11	25/32	15/16	3	4 1/4	23 3/4	17 7/8	5 7/8	20	19 7/8	2 3/4	2 5/8	5	3/8	5/8	5/16	3	15 5/16	12 7/8	13 1/4	4 1/2	56.6	555	1650

CUSTOMER NAME _____

CUSTOMER ORDER NO. _____ BY _____

IMPERIAL ELEC. ORDER NO. _____ DATE _____

FRAME _____ HP _____ RPM _____ VOLTS _____

CUSTOMER DIMENSION DRAWING

SCALE 1/4"=1, 284

DESIGN 5-2000-2001

REF. DRAWN R.FOX

DATE 1/5/96

DATE _____

INS. _____

DATE _____

TITLE D.C. MOTOR DRIPPROOF, "AT" EXT. BALL BRG., W/FEET

FRAME NO. 250-400

H- _____

REDRAWN 1/5/96

IMPERIAL ELECTRIC CO. INC. 5-2000-2025